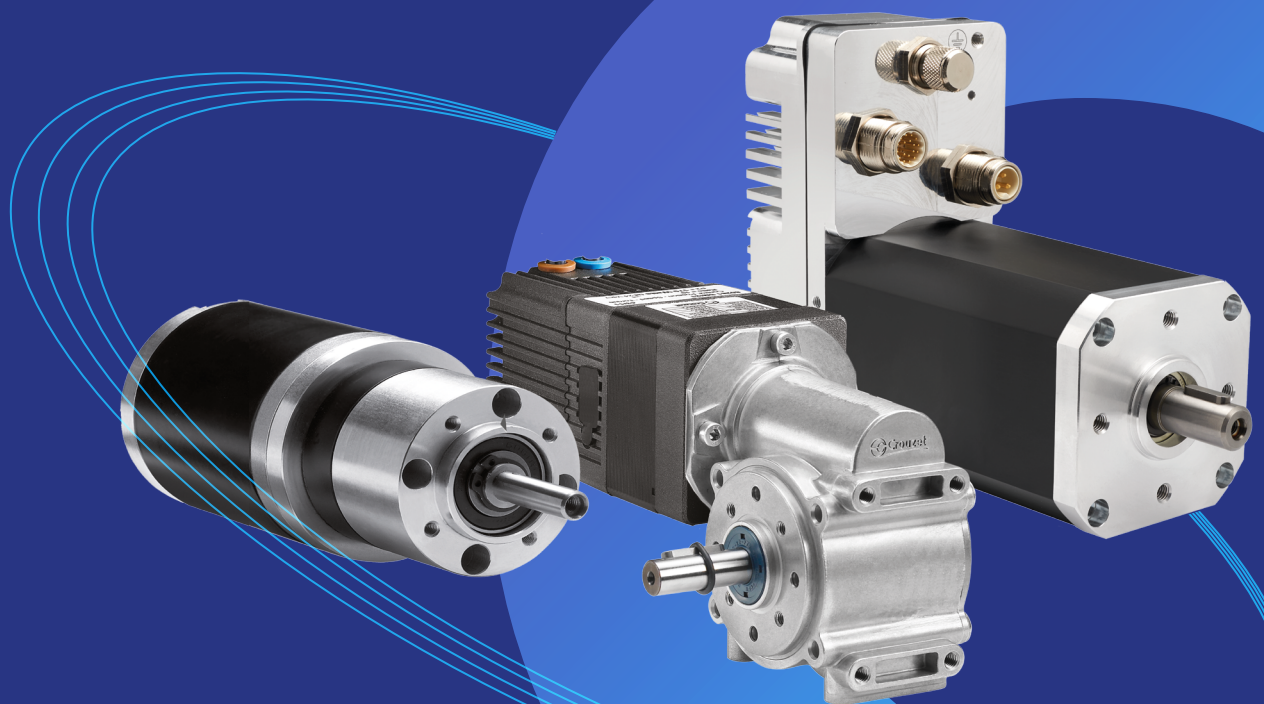


MOTORS & GEARMOTORS

Overview



ABOUT CROUZET

100 YEARS MANUFACTURING THE FUTURE *Together*

Crouzet is an independent company **manufacturing mechatronic components for demanding applications in Aerospace & Transportation, Energy, Building & Machinery Industry.**

Crouzet provides **Switches & Sensors, Electromechanical Actuators, Electrical Control & Protection Equipment, Flight Control Equipment, Automation Controllers & Relays, and Instrumentation Services.**

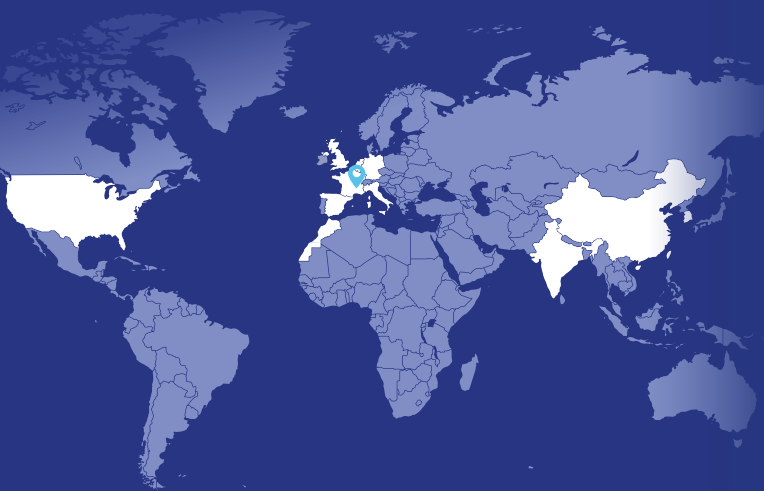
Since 1921, Crouzet has a heritage of close collaboration with customers in the development of products, from standard components to fully customized solutions.

Crouzet's customers and partners can rely on our teams worldwide to always meet and often exceed their expectations. Driven by innovation, our experts are focused on designing and delivering the right product for the right application.

Crouzet is your trusted partner of choice to face the industrial challenges of today and tomorrow.

WORLDWIDE PRESENCE

10 Manufacturing Plants
& 6 R&D Labs



 HEADQUARTERS  SALES OFFICES



VALENCE, FRANCE



PONT-DE-L'ISÈRE, FRANCE



PARIS, FRANCE



NANTES, FRANCE



ORLEANS, FRANCE



VOUVRY, SWITZERLAND



CASABLANCA 1, MOROCCO



CASABLANCA 2, MOROCCO



HUIZHOU, CHINA



BANGALORE, INDIA

MOTORS

	INDUSTRIAL BRUSH			DCmind BRUSH		DCmind BRUSHLESS		SYNCHRONOUS		STEPPER
SERIES	82840 82860	82800 10 50	82830 82890	89800 10 50	89830 89890	80140 180 280	80350 60 70	82510 20 30 40	82330 82340	82910 20 30 40
Nominal power (W)	0.9 / 3	9 → 33	27 → 95	15 → 35	54 → 104	66 → 150	310 → 600	0.3 → 3	0.2 / 0.4	0.5 → 5
Voltage	12 → 24 V $\overline{\text{---}}$	12 → 48 V $\overline{\text{---}}$	12 → 48 V $\overline{\text{---}}$	12 → 48 V $\overline{\text{---}}$	12 → 120 V $\overline{\text{---}}$	9 → 75 V $\overline{\text{---}}$	9 → 75 V $\overline{\text{---}}$	24 → 240 V \sim 50 → 60 Hz	24 → 240 V \sim 50 → 60 Hz	3 → 64 V $\overline{\text{---}}$
Front side (mm)	∅ 32	∅ 42	∅ 63	∅ 42	∅ 63	SQ57	SQ75	∅ 35 / 51 ∅ 57 / 65	∅ 47	∅ 35 / 51 ∅ 57 / 65
Nominal speed (rpm)	3700	3000	3000	3000	3000	3000	3000	250 → 600	600 → 720	0 → 1500
Nominal torque (mN.m)	2.2 / 7.7	41 → 100	170 / 270	50 → 110	180 / 290	125 → 550	830 → 1900	10 → 110	2.5 → 8	15 → 300
Noise level (dBA)	55	55	55	35	35	45	50	30	45	35
Service life (hrs)	2000	3000	5000	4000	5000	20000	20000	20000	10 M on / off	20000
Certification										
Gearboxes										
Connection										
Standard										
Options										
IP		IP20		IP65*		IP54	IP65*, IP67*, IP69*	IP40	IP30	IP40

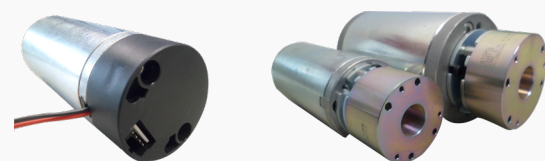
* Except front face & shaft

EMC filter	Worm	Terminal	Planetary	Parallel shafts	Interchangeable brushes	Encoder
Cable	Ball bearing	Connector	Lead	Silent	Optional regenerative energy absorber	Brake

ACCESSORIES & OPTIONS

- › Brakes from 0.25 to 4.5 N.m⁽¹⁾
- › Encoders from 1 to 1000 Pulses per Revolution⁽²⁾
- › Special connectors
- › Special output shafts (design and/or material)
- › Others : on demand

⁽¹⁾ Except Industrial Brush ∅32, Synchronous and Stepper ranges
⁽²⁾ Industrial Brush and DCmind Brush ranges only



ADAPTED PRODUCTS

To meet your expectations, Crouzet offers you custom products matching your requirements, in the following areas:

- › Control electronics
- › Motor characteristics
- › Gearboxes
- › IP65, IP67, IP69
- › EtherCAT



CONTROL ELECTRONICS

	INTEGRATED			EXTERNAL	
SERIES	TNi21	SMi21	SMi22	BDE 30	BDE 40
Compatible models	SQ57		SQ75	SQ57	
Speed-torque	•	•	•	•	•
Position (P/R)		4096	4096		
Programming	DCmind Soft & DCmind Soft + CANopen		DCmind Soft + CANopen	PWM or 0 → 10 V $\overline{\text{---}}$	
Communication bus		Optional CANopen	Standard CANopen		
Voltage	10 → 36 V $\overline{\text{---}}$	9 → 75 V $\overline{\text{---}}$	9 → 75 V $\overline{\text{---}}$	18 → 36 V $\overline{\text{---}}$	10 → 36 V $\overline{\text{---}}$
Maximum current (A)	17	17	75	10	14
Adaptations	Programs: Custom firmware as per customer specifications				

GEARBOXES

	PARALLEL SHAFTS	PLANETARY	WORM
CHARACTERISTICS	11 models	7 models	2 models
Torque (N.m)	0.5 → 6	0.8 → 120	10 → 20
Power (W)	0.2 → 50	8 → 600	25 → 600
Service life (Mr*)	1 → 10	50	50
Ratios	4 → 1036800	4 → 308	5 → 100
Options	Stainless stell shafts, pulleys, pinions, special bearings, etc...		

* Million revolutions



100+ years of customization, adaptation & co-design expertise at your service

DESIGN LAB

To meet market expectations and provide customers with the right solutions within the shortest timeframes, Crouzet has structured all company processes around the different types of product: standard products, adapted products or products specially developed for a customer. Introducing the adaptation wheel...

4

SPECIAL PRODUCTS

When the adaptation is no longer suitable, we focus our design, manufacturing and qualification expertise on developing a new product designed to meet your requirements.



1

STANDARD PRODUCTS

We offer a full range of motors and geared motors, including AC synchronous, brush and brushless DC and stepper motors. Our products are available immediately so you can quickly implement your projects.



3

ADAPTED PRODUCTS

All projects are different, so we adapt the performance and functionality of each product to your requirements, ensuring the success of your most complex applications.



2

PRODUCTS WITH ADDED VALUE

All our standard products can be complemented by factory-installed extras, accessories or programs including connectors, special contacts, software etc., to assist integration into your equipment, simplify your logistics and maximize the reliability of your installations.



ACTUAL EXAMPLES

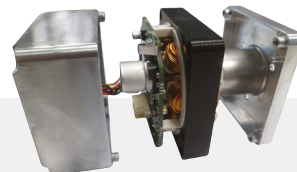
Brushless motor with integrated electronics for Access Control in public transportation applications:

- › Autonomous torque, speed and position control
- › Reinforced gearbox
- › Specific firmware with integrated emergency mode
- › CANopen communication
- › High resistance against vandalism



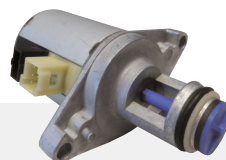
Gear pump equipped with a brushless motor:

- › Rotor with leak tight seal
- › Application-specific electronics
- › Shortened motor



Releasable linear actuator for gas boilers equipped with a stepper motor:

- › Gas flow adjustment
- › Automatic closing in the event of a power failure
- › Gas-tightness measured on the production line



AMERICAS**CANADA**

Tel.: +1 (855) 929-5465
americas.custserv@crouzet.com

MEXICO

Tel.: +1 (855) 929-5465
americas.custserv@crouzet.com

USA

+1 (855) 929-5465
americas.custserv@crouzet.com

EUROPE / MIDDLE EAST / AFRICA**BELGIUM**

Tel.: +32 (0) 2 620 06 05
Fax: +32 (0) 2 461 00 23
klantenservice@crouzet.com

FRANCE

Tel.: +33 (0) 475 802 101
Fax: +33 (0) 475 828 900
relationclient@crouzet.com

GERMANY / AUSTRIA

Tel.: +49 (0) 2103/9385930
Fax: +49 (0) 2103/980-222
kundenservice@crouzet.com

ITALY

Tel.: +39 (02) 38 594 099
Fax: +39 (02) 82 952 104
assistenzaclienti@crouzet.com

MOROCCO

Tel.: +212 5 20 48 03 40
sales.mena@crouzet.com

SPAIN / PORTUGAL

Tel.: +34 (91) 215 80 95
Fax: +34 (93) 2 20 02 05
atencionalcliente@crouzet.com

SWITZERLAND

Tel.: +41 (0) 225 67 57 90
Fax: +41 (0) 565 88 02 75
kundenservice@crouzet.com

THE NETHERLANDS

Tel.: +31 (0) 20-654 52 20
klantenservice@crouzet.com

UNITED KINGDOM

Tel.: +44 (0) 2076 600 025
customer.relation@crouzet.com

ASIA / PACIFIC**CHINA**

Tel.: +86 (752) 5303 200
china@crouzet.com

INDIA

+91 (80) 2111 1092
india@crouzet.com

SOUTH KOREA

Tel.: +82 (2) 2679 8312
korea@crouzet.com

SOUTH ASIA PACIFIC

Tel.: +86 (752) 5303 200
eap@crouzet.com

Warning:

The product information contained in this catalogue is given purely as information and does not constitute a representation, warranty or any form of contractual commitment. Crouzet and its subsidiaries reserve the right to modify their products without notice. It is imperative that we should be consulted over any particular use or application of our products and it is the responsibility of the buyer to establish, particularly through all the appropriate tests, that the product is suitable for the use or application. Under no circumstances will our warranty apply, nor shall we be held responsible for any application (such as any modification, addition, deletion, use in conjunction with other electrical or electronic components, circuits or assemblies, or any other unsuitable material or substance) which has not been expressly agreed by us prior to the sale of our products.