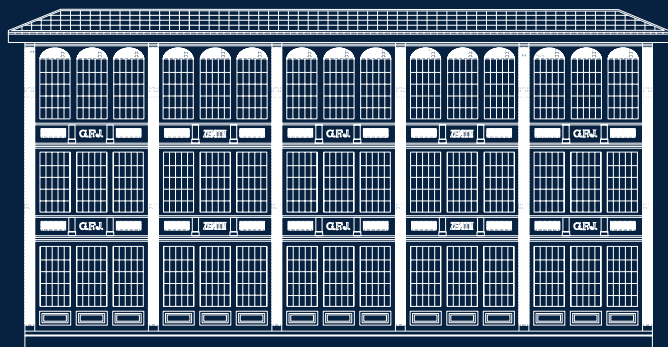


# ZENITH

THE FUTURE OF SWISS WATCHMAKING SINCE 1865



QUICK STEP GUIDE





ZENITH, BRANCH OF LVMH SWISS MANUFACTURES SA,  
BILLODES 34, 2400 LE LOCLE, SWITZERLAND  
INFO@ZENITH-WATCHES.COM  
+41 32 930 62 62



# INTRODUCTION

## ZENITH, THE FUTURE OF SWISS WATCHMAKING SINCE 1865

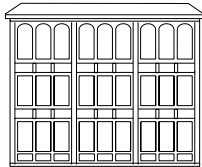
With innovation as its guiding star, Zenith features exceptional in-house developed and manufactured movements in all its watches.

From the first automatic chronograph, the El Primero, to the fastest chronograph with a 1/100th of a second precision, the El Primero 21, as well as the Inventor that reinvents the regulating organ by replacing the 30+ components with a single monolithic element, the Manufacture is always pushing the boundaries of what is possible. Zenith has been shaping the future of Swiss watchmaking since 1865, accompanying those who dare to challenge themselves and reach for their star.



# EXCELLENCE IN KNOW-HOW

At the Zenith Manufacture, our watchmakers and Heritage Department's dedicated restoration experts are able to repair any Zenith watch ever made during the company's history of uninterrupted watchmaking since 1865. With a comprehensive archive and original spare parts stock spanning the entire history of the brand, along with the ability and know-how to reproduce any component for any Zenith watch, our teams take the utmost care in servicing and restoring yours; preserving its legacy for years and generations to come.





# INTERNATIONAL WARRANTY

Zenith watches are the product of our Manufacture and are high-precision, high-tech products. Before your watch leaves the Manufacture, it is subjected to numerous stringent quality checks. However, should there be any manufacturing faults, an international warranty means your watch is covered for two years starting from the date of purchase. This warranty is observed by service centers approved by Zenith worldwide if the following cumulative conditions are observed:

- The watch has been purchased from an official dealer as approved by Zenith; you can find the list of all authorized point of sales on our website, [zenith-watches.com](http://zenith-watches.com). The name or stamp of the authorized retailers, the date of purchase and the watch reference are clearly detailed on the warranty card.
- Your watch is worn in normal conditions and maintained in accordance with Zenith's recommended care instructions and has not been subjected to improper handling.
- The warranty card, the only valid proof of purchase, must be sent along with your watch to an authorized Zenith service center.

Please be aware that Zenith's international warranty does not cover normal ageing of your watch, natural wear and tear of the leather, fabric or rubber straps, nor any scratches that may appear on the case or sapphire crystals during use. The decision to repair a Zenith watch or take any other appropriate measure under this warranty is at the sole discretion of Zenith, Branch of LVMH Swiss Manufactures SA or its official service centers.

This warranty automatically cancels and replaces all other warranties incorporated in national legislation. Certain local regulations (especially within the European Union) may forbid the exclusion, in which case the exclusion of the above-mentioned warranty does not apply. In such case, especially within the European Union, the consumer has – in addition to this warranty – legal rights under the applicable national legislation governing the sale of consumer goods, which are not affected by this warranty.



Sign up on our website, [zenith-watches.com](http://zenith-watches.com), to receive three additional year's warranty (i.e. 5 years in total).



# MAINTENANCE

Only Zenith certified service centers are entitled to handle the maintenance and repair of Zenith watches. Having your Zenith watch regularly serviced contributes to preserving its exceptional precision as well as its visual appearance.

The list of Zenith certified service centers is available on our [zenith-watches.com](http://zenith-watches.com) website.





# GETTING STARTED

## **WINDING YOUR WATCH: EL PRIMERO 21**

In order to wind your watch, take it in hand and turn the crown counterclockwise at least 30 times, and clockwise to wind the chronograph mechanism.

## **WINDING YOUR WATCH: OTHER CALIBRE**

To wind your watch, pick it up and turn the crown at least 30 times. This will wind the mainspring. For models fitted with a screw-lock crown, unscrew the crown before making any adjustments. For models equipped with a fusée and chain transmission system, pull out the crown one click<sup>(1)</sup> to wind the watch.

## **SETTING THE TIME AND DATE FOR MODELS WITH DATE FUNCTION**

**Important:** The setting of the time should always be done in a clockwise manner, where the hands move only forwards. The quick setting of the date should not be attempted between 21:00 and 06:00.

**If your watch is equipped with an El Primero movement (except El Primero 3600), pull out the crown two clicks<sup>(2)</sup>.** Turn the crown until the day before the correct date appears.

Press the crown back one click and make the hands turn until the correct date and time are displayed.



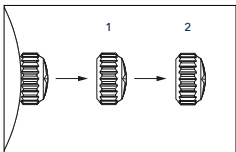
If your watch is equipped with an Elite movement or an El Primero 3600, pull out the crown one click<sup>(1)</sup>. Turn the crown until the day before the correct date appears. Pull out the crown two clicks<sup>(2)</sup> and make the hands turn until the correct date and time are displayed.

#### **SETTING THE TIME FOR MODELS WITHOUT A DATE FUNCTION**

For both Elite and El Primero movements, pull out the crown to the extreme position. Position the hands on the correct time. For models dating from 2016 and before, refer to the specific instructions for use on the website.

#### **PUSH THE CROWN RIGHT UP AGAINST THE CASE**

Tighten the crown again if it is a screw-lock crown.



*For information on other complications,  
kindly consult our website [zenith-watches.com](http://zenith-watches.com)*



# USER ADVICE

## WATER RESISTANCE

Before any contact with water, check that the crown is fully pushed back against the case. Do not use the push-pieces and crown when the watch is under water.



**1 ATM (1 BAR / 10 m)**

Resistant to rain and perspiration.



**3 ATM (3 BAR / 30 m)**

Resistant to brief immersions (hand-washing).



**5 ATM (5 BAR / 50 m)**

Resistant to swimming.



**10 ATM (10 BAR / 100 m)**

Resistant to all water sports.



**20 ATM (20 BAR / 200 m)**

Resistant to extreme water sports.

## CONDENSATION

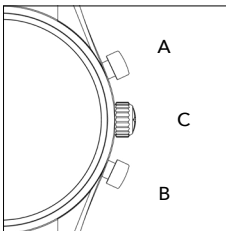
The presence of condensation under the glass does not necessarily mean that your watch is not waterproof, or that water entered inside. The air inside the watch always carries a percentage of water in the form of gas (H<sub>2</sub>O). A condensation phenomenon can occur due to a thermal shock, cause for example by the following situation: a watch stays in the sun and is then suddenly submerged in water (dive in the swimming pool), or by sprayed water (hand wash).

The condensation appears following a temperature difference between the inside and outside of the watch, even in the case of a water proof watch. An elusive condensation (that disappears after a few seconds) under the glass does not damage the long term function of your watch, and does not mean that you watch has a water leak.

### **CHRONOGRAPH**

For chronograph watches, do not use the chronograph hand as a direct-drive (continuously running) seconds hand. Be careful to push in the push-piece (B) in order to reset the hands back to zero.

- A • Activate and stop
- B • Zero-resetting
- C • Crown





# RECOMMENDATIONS



Avoid wearing your watch when engaging in "rough" sports.



Keep the watch away from any kind of magnetic fields.



Do not expose the watch to sources of heat.



It is recommended to carry out regular water-resistance and precision checks, and if necessary a revision, at a Zenith Certified Service Center, depending on the model and its daily use.



Clean your watch regularly with a soft cloth.



Always rinse your watch in fresh water after a swim in the sea.



### **METAL BRACELETS**

- Better suited to contact with water.
- Traditional care using a soft cloth.



### **LEATHER STRAPS**

- Their longevity varies according to conditions of use.
- Since this is a natural material, we recommend avoiding regular immersions in water.



### **NUBUCK**

Nubuck is a native Tuscan calf leather. It is completely pure and natural with an oily touch. The surface is untreated and therefore decoloration and colour differences may occur. The leather acquires over time an individual used look that is highly appreciated by its wearers.



### **COLORED CALF LEATHER STRAP**

Calf strap has a natural smooth appearance. On its surface, discoloration and color differences may occur, especially in the very first moments of use. It is also susceptible to alteration when exposed to water. The leather will acquire a unique patina over time, giving it an individual used look that is highly appreciated by its wearers.



# LEGAL PROVISION

Zenith will ensure spare parts' availability for a period of 10 years from the date of purchase (to the exception of the Zenith Icons).

## **DIAMONDS AND PRECIOUS STONES**

Zenith, a branch of LVMH Swiss Manufactures SA, certifies that the diamonds in your watch have been purchased from legitimate sources not involved in the financing of armed conflict and in accordance with United Nations resolutions. The seller thus warrants that these diamonds are not used to finance armed conflicts, at least to his knowledge and / or according to written warranties issued by the supplier of these precious stones. These gems have been carefully selected from the best in the world.

## **LEAD**

Certain internal and inaccessible components of the movements in these watches may be manufactured with alloys which contain small quantities of lead. The use of lead is necessary in our current manufacturing processes to guarantee the machinability of certain components. The use of the substance does not present a danger of migration or exposure for downstream users or consumers and is authorized by the applicable legislation.

**RESPONSIBLE WATCHMAKING:  
ZENITH IS RJC-CERTIFIED**

The RJC is an international organization working to promote ethical, social and environmentally responsible practices, with respect for human rights, from one end of the jewelry industry to the other, from extraction to the sales counter. The Swiss Watchmaking Manufacture Zenith is proud to be RJC-certified for having fulfilled the standards established by the organization's certification system.

**KIMBERLEY PROCESS: "CLEAN" DIAMONDS**

The Kimberley process is the product of a joint initiative between governments, the industry and civil society. Adopted in 2003 by more than 75 countries, it aims to curb the trade of rough diamonds from areas of conflict, as defined by the United Nations. The Kimberley certification process ensures, through the issuance of a certificate, that no rough diamond that has crossed an international border between two signing countries has come from an area of conflict. Based on the written warranties provided by its suppliers, Zenith certifies that all of its diamonds are cut from legitimate sources and are not involved in armed conflict.



# USER MANUAL

Find all our user manuals on our website [zenith-watches.com](https://zenith-watches.com)

請瀏覽[zenith-watches.com](https://zenith-watches.com)查閱使用指南。

請浏览品牌官网[zenith-watches.com](https://zenith-watches.com)查阅用户指南。

すべてのユーザーズマニュアルは当社のウェブサイト上

( [zenith-watches.com](https://zenith-watches.com) ) でご確認いただけます

جميع أدلة المستخدمين على موقعنا [zenith-watches.com](https://zenith-watches.com)

Tutti i nostri manuali d'uso sono disponibili sul sito [zenith-watches.com](https://zenith-watches.com)

Descubra todos nuestros manuales de usuario en nuestro sitio web [zenith-watches.com](https://zenith-watches.com)

Encontre todos os nossos manuais de instruções no nosso website [zenith-watches.com](https://zenith-watches.com)

Найдите все наши руководства по использованию на сайте [zenith-watches.com](https://zenith-watches.com)

Alle unsere Gebrauchsanweisungen finden Sie auf unserer Website [zenith-watches.com](https://zenith-watches.com)





Publisher:

Zenith Communication and Marketing Department  
© Zenith Branch of LVMH Swiss Manufactures SA  
Printed in China

Zenith reserves the right to modify at any time and without  
prior notice the specifications relating to the products  
shown in this publication.  
March 2023



TIME TO REACH YOUR STAR

[ZENITH-WATCHES.COM](http://ZENITH-WATCHES.COM)